

# Enterprise Manager



antivirus



firewall



antispam



antispyware

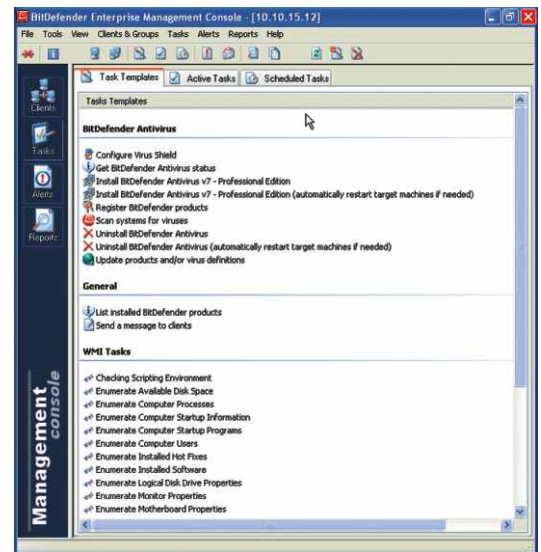
## BitDefender Enterprise Manager

The antivirus solutions integrator from BitDefender

BitDefender Enterprise Manager integrates BitDefender products into one watertight security solution. The latest version takes network protection one step further with support for Windows Management Instrumentation (WMI) administration tasks.

Enterprise Manager allows for full automation of routine tasks (including upgrades and updates), while letting the administrator install clients and execute tasks from anywhere in the network, in a safe and secure manner.

BitDefender Enterprise Manager is bundled with BitDefender workstation and server products in Enterprise packs, designed to get your network's security up and running in one go, without the need to worry about integrating heterogeneous products. Excellent protection is achieved while keeping total cost of ownership and administrator workload low.



### Use Enterprise Manager to:

- Meet the security needs of large networks
- Integrate your BitDefender products into one watertight security solution
- Manage the update process of Windows 2000/XP/2003 systems
- Filter and group clients using admin-created rules
- Get real-time status reports from clients
- Create BitDefender Enterprise Manager clients automatically and remotely
- Manage the networked clients, protection tasks and reports
- Use WMI controls to stop potentially harmful tasks running on workstations
- Run WMI tasks to remove software, and get hardware and system information
- Receive real-time security alerts from networked clients
- Generate and display detailed reports and statistics
- Program the execution of recurring operations
- Use the management console to configure the products installed on workstations
- Create groups of BitDefender clients for easy administration
- Execute tasks on a single station, entire groups or across the entire network
- Stand by and watch as the Update module upgrades your protection with the latest product versions and signature files or restores your BitDefender products
- Enjoy 24/7 tech support in a variety of languages



## BitDefender WMI Scripts

BitDefender introduces a new tool designed to facilitate administrative control over large networks. BitDefender WMI Scripts v1.1 (Server Add-On) implements tasks based on WMI.

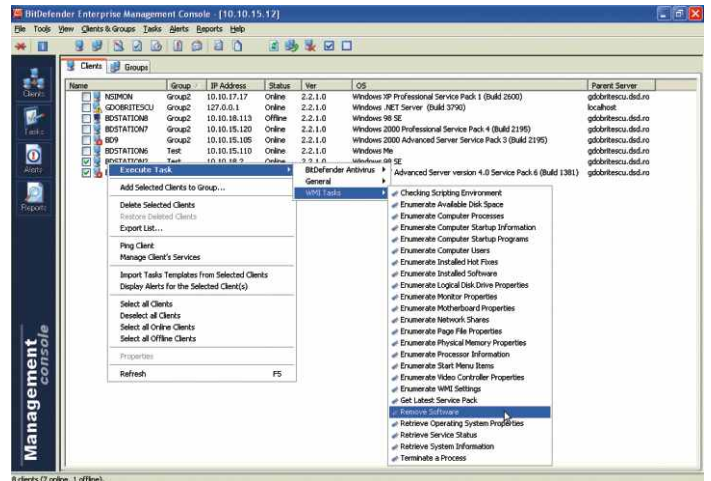
These tasks can be executed across the BitDefender Enterprise Manager network.

Basically, this new feature allows running of script tasks across the BitDefender Enterprise Manager network. BitDefender WMI Scripts v1.1 adds over 20 more tasks to the BitDefender Enterprise task lists.

Using these tasks, an administrator can easily gather information about the workstations within the network: hardware properties, startup programs, installed software, hot fixes and service packs and much more.

The administrator can even terminate processes remotely and uninstall software.

**Note:** BitDefender WMI Scripts (Server Add-on) is only available as part of BitDefender Enterprise Packs.



## System requirements

Microsoft Windows Network (TCP/IP)

### For BitDefender Server:

Intel Pentium compatible processor - 200 MHz or higher  
 HD space: 100MB  
 RAM: 128MB (256MB recommended)  
 Operating systems: Windows NT4.0 SP6/2000/XP  
 Internet Explorer 5.0 +

### For BitDefender Management Console:

Intel Pentium compatible processor  
 RAM: 64MB  
 HD space: 10MB  
 Operating system: Windows 98 SE/Me/NT4.0 SP6/2000/XP  
 Internet Explorer 5.0 +  
 Display: minimum resolution of 800x600/16 bit

### For BitDefender Local Manager:

Intel Pentium compatible processor  
 RAM: 32MB  
 HD space: 10MB  
 Operating system: minimum Windows 98 SE  
 Internet Explorer 5.0 +

### For BitDefender Deployment Tool:

Operating system: Windows NT4.0 SP6/2000/XP  
 Internet Explorer 5.0 +

