

# MS Exchange 2003



antivirus

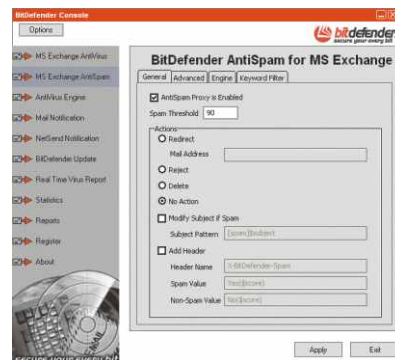


antispam

## BitDefender for MS Exchange 2003

The future of Exchange servers protection.

BitDefender for MS Exchange 2003 provides antivirus protection and anti-spam engines, deeply integrated with the MS Exchange 2003 server. This product embodies the best of BitDefender technologies to create a wholly clean Exchange environment. Due to the VS-API 2.5 technology, BitDefender for MS Exchange 2003 seamlessly integrates with the e-mail server, assuring advanced filtering of e-mail messages without affecting server performance or e-mail traffic.



### Key Features:

#### Antivirus Scanning and Cleaning

The powerful BitDefender scanning engines showed 100% detection rate for all viruses in circulation (certified by ICSA Labs, CheckMark, CheckVir, TÜV and Virus Bulletin).

#### AntiSpam Filtering

The existing antispam infrastructure of Exchange 2003 is leveraged for antispam protection. In addition to that, BitDefender proprietary technologies are used. It incorporates six different filters: Keyword filter, White List/Blacklist, charset filter, URL filter and heuristic filter.

#### Update Pushing

BitDefender for MS Exchange 2003 can be configured to initiate an update upon receipt of a specially crafted "update announcement" message from BitDefender Labs (subscription service).

#### Detailed Reports and Statistics

BitDefender for MS Exchange 2003 comes with a separate report module which provides daily, weekly or monthly statistics organized by categories. The reports can be generated and viewed in the administration console.



## Blocks Infected Messages

Filters and blocks messages if attachment or message body include a virus, Trojan, backdoor or other potentially dangerous active codes. It blocks infected files regardless of the archive or compression type.

## Intelligent Signature Update

Enables automatic update of virus definitions, without user intervention, directly from the BitDefender servers or from approved mirror sites. Thus, server traffic protection is kept up-to-date, ensuring a swift and effective reaction.

## Scanning at Transport Level

Messages may be scanned at the transport level using VS-API 2.5. This allows messages passing through a gateway Exchange server that would not normally enter the Exchange store to be scanned.

This prevents infected messages from entering the Exchange organization.

## Outbound Scanning

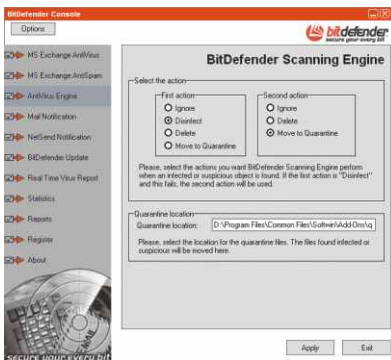
For sent messages, outbound scanning has been re-architected (in Exchange 2000 SP3, as well as Exchange 2003) such that all outbound messages will be scanned prior to being sent.

## Optimized Scanning

E-mail messages with multiple recipients are filtered only once, before delivery, and not every single recipient.

## Extended Protection

Antivirus protection for recently created mail boxes.



## System requirements

- Minimum 20 MB available hard disk space (50 MB recommended)
- MS Exchange 2003



## Self-adjusting Antivirus Activity

Avoids e-mail server overloading or speed loss in data transmission, according to system processes of the e-mail server.

## Pro-active Scanning

A new scan process for e-mail messages enables prioritizing according to delivery requests from the e-mail client.

## Secures Infected or Suspected Files

Infected or suspected files are isolated in quarantine zones, preventing the infection of the network. The quarantine zone can be analyzed at any time by the IT manager or it can be sent for analysis to the BitDefender Antivirus Labs.

## Heuristic Analysis Technology

The heuristic filter performs a set of tests on all the message components, (i.e. not only the header, but also the message body in either HTML or text format), looking for words, phrases or links which are common to spam.

## WBL (White List/ Blacklist) support

This quite simply means that the admin can set a list of trusted and untrusted addresses from which to respectively "always accept" or "always reject" mail.

## Instant Warning Messages

If a virus is detected, detailed warning messages are sent instantaneously to the network security and management staff.

## Remote Management

Enables remote configuration of the server protection, by simply installing the management console on one computer in the network.

## Fully integrated with Enterprise Manager

BitDefender for MS Exchange 2003 is fully compatible with Enterprise Manager, offering organizations centralized management for antivirus protection and security policies inside complex networks.